



Deadman Creek Conservation Bank

- San Joaquin kit fox • Vernal pool preservation
- California tiger salamander • Swainson's hawk

710 acres

Location: Merced County, California

Mitigation available:

San Joaquin kit fox credits

Service area: Portions of Stanislaus, Merced, Madera, Fresno, Mariposa, Tulare and Kings Counties

Vernal pool preservation credits

Service area: Portions of Kern, Tulare, Kings, Fresno, Madera, Merced, Stanislaus, and San Joaquin Counties

California tiger salamander credits

Service area: Portions of San Joaquin, Amador, Calaveras, Alameda, Stanislaus, Tuolumne, Mariposa, Merced, and Madera Counties

Swainson's hawk habitat

As approved by CEQA lead or CDFG, on a case-by-case basis

See service area maps

Contact:

Julie Maddox

Wildlands, Inc.

3855 Atherton Road

Rocklin, CA 95765

(916) 435-3555

jmaddox@wildlandsinc.com



Deadman Creek Conservation Bank Vernal Pool Preservation Service Area

DCCB



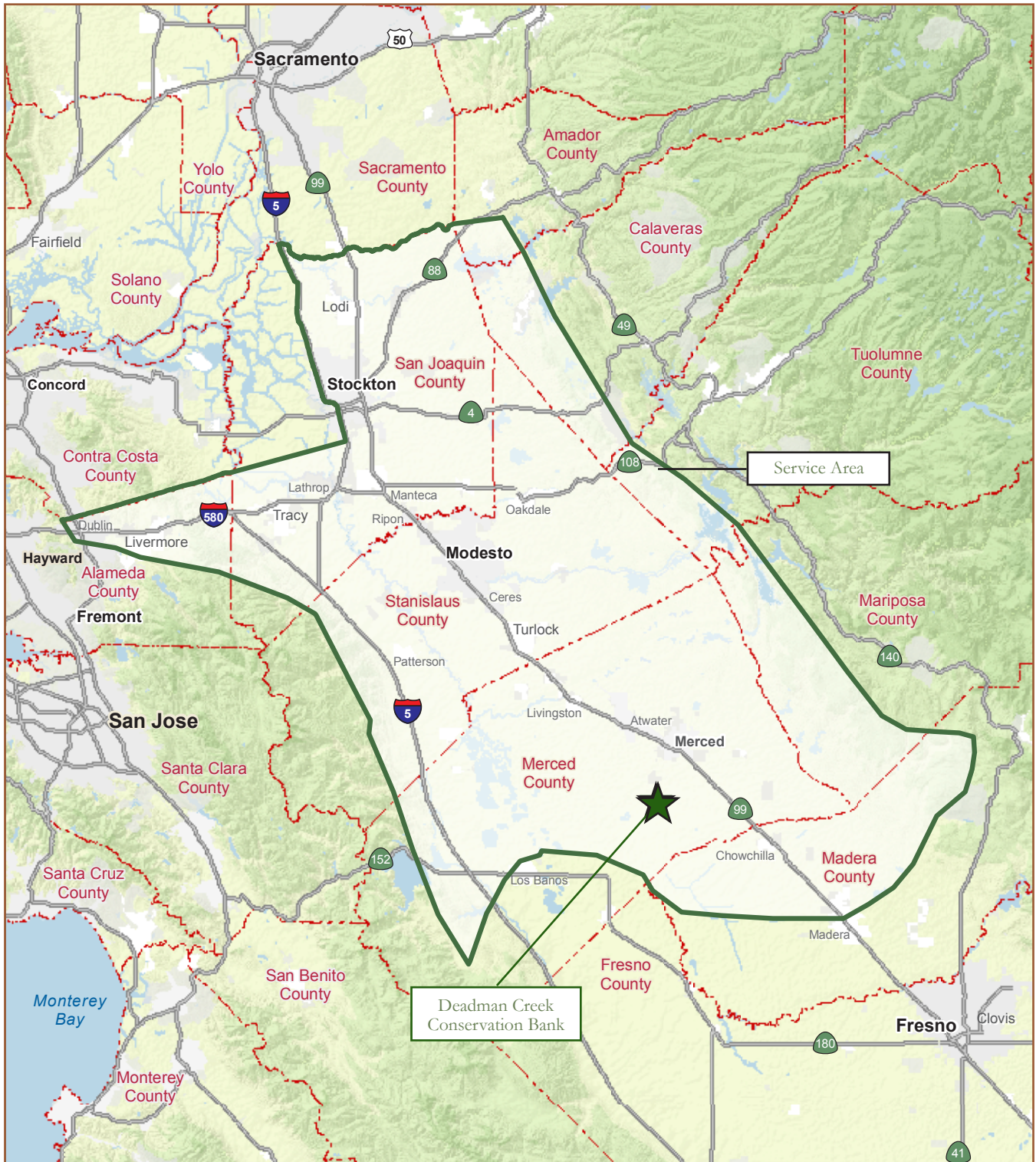
NOT TO SCALE

916-435-3555 • wildlandsinc.com



Deadman Creek Conservation Bank California Tiger Salamander Service Area

DCCB



NOT TO SCALE

916-435-3555 • wildlandsinc.com

